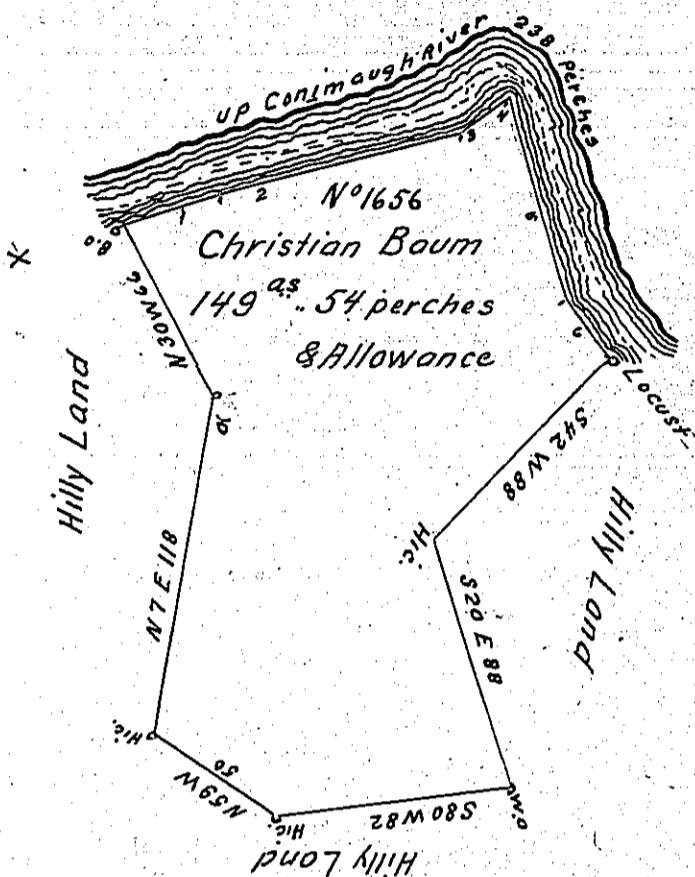


No. Courses	Courses of Conimaugh Distance &c.
1	N 71 E 34
2	N 73 E 88
3	N 60 E 7
4	N 47 E 12
5	S 18 E 72
6	S 45 E 25
Total Distance 238	



In pursuance of an Order N° 1656 Dated the 3^d of April 1769 (Sobl.) for Christian Baum the above Described tract of Land Containing One Hobl. and forty nine Acres & 54 perches with an Allowance proportioned to 6 p. (obl.) Situate on Conimaugh River near Land Apply'd for by Anthony Altho (obl.) in Westmoreland County Survey'd the 29th of May 1770 p.

Now in Derry Township Westmoreland County

To John Lukens. Esq.

Robert M^c Crea (obl.)

S. Genl.

D. S.

IN TESTIMONY that the above is a copy of the original remaining on file in the Department of Internal Affairs of Pennsylvania, made conformably to an Act of Assembly approved the 16th day of February, 1833, I have hereunto set my Hand and caused the Seal of said Department to be affixed at Harrisburg, this fourteenth day of April 1904.

George D. Brown
Secretary of Internal Affairs.